

Henke and Schreieck Architects Vienna

Single-family house
Vienna, Austria

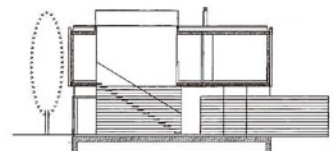
Dieter Henke and
Marta Schreieck

Project team
Dieter Henke, Marta Schreieck
with Jimin Chen, Rudolf Seidl,
Gemeiner Haferl
(structural engineer)

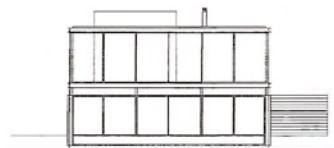
Construction
1997-98



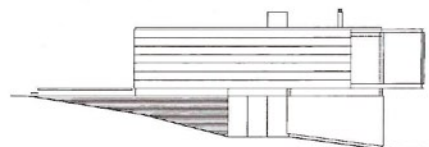
section



street elevation



long elevation





The house is located in a beautiful green area to the west of Vienna. Its position on the site was determined largely by building regulations. These restrictions led to the idea of developing a house that expresses a sense of duality, with an urban character facing the street and rural face opening on to an existing orchard.

The whole upper floor was designed to be a big single-volume space, structurally held by one retaining wall and cantilevering on the street side. The children's rooms were developed as independent boxes, placed underneath the upper-floor box.

Following the retaining wall, the house is entered from the long side. The upper floor is divided sideways by the staircase and lengthways by a long cupboard that splits the volume into different spaces.

The house uses a light-weight construction: the structure is made of steel while the floors and walls are of wood. Wood is also used for the interiors, resulting in a strong inside-outside relationship.



